

## 3<sup>rd</sup> Grade Academic Scavenger Hunt 2012

The 3<sup>rd</sup> grade teams did very well! Congratulations! Very few points were lost because of incorrect answers.

Note: The essential elements of the answer had to be present in some form of demonstrated understanding. Partial points were given for incomplete answers.

Some points were lost for misspellings or incomplete documentation.

A few teams did very well on their answers, but only had one source of documentation. This cost them full points.

The original answer sheets are not returned; email Merritt if you have specific questions on how your team did on each question.

I've given only one resource here (to save space), but did include that in case you want to read more about the answer.

### ANSWERS

#### The Animal Kingdom

1. How many bones does a giraffe have in its neck?
  - a. Despite the length of its neck, a giraffe has only seven neck bones – the same number that human beings and most other mammals have. 7  
*The Encyclopedia of Mammals, David Macdonald, pg. 534*
2. What does a leafcutter ant eat?
  - a. The leafcutter ant grows its own food. They cut bits of leaves, carry them back to their nests and chew them up, mix the bits with their droppings to make compost heaps. They eat the fungus that grows on the compost.  
*World Book Encyclopedia, 1A, "Ants," pg. 528*
3. What does an African Penguin sound like?
  - a. Also called jackass penguins, they make donkey-like braying sounds to communicate.  
<http://www.animalfactguide.com/animalfacts/african-penguin/>
4. What is Myrmecology?
  - a. The study of ants.  
*Webster's Dictionary, Unabridged, pg. 1189*
5. What did Jane Goodall study?
  - a. Jane Goodall became the foremost authority on chimpanzees.  
*100 Most Popular Scientists for Young Adults, page 221*

6. A flamingo makes its nest out of what material?

a. A flamingo makes its nest out of a flattened cone of mud.

*Animals: a Visual Encyclopedia, page 140*

7. We all know fish swim in groups – but what is the difference between a “school of fish” and a “shoal of fish”?

a. Schooling fish are all the same type; they swim close together in a synchronized fashion. A shoal is a looser collection of fish that swim in a group. Shoals may be made of mixed groups of fish.

*Animals: a Visual Encyclopedia, page 215*

## The Sciences

8. For what is the Gossamer Albatross known?

a. *The original Gossamer Albatross is best known for completing the **first completely human powered flight across the English Channel** on June 12, 1979. The aircraft was powered using pedals to drive a large two-bladed propeller. Piloted by amateur cyclist Bryan Allen it completed the 35.8 km (22.2 mi) crossing in 2 hours and 49 minutes, achieving a top speed of 29 km/h (18 mph) and an average altitude of 1.5 metres (5 feet).*

*Book of Flight, Judith Rinard, pg. 75*

9. What famous Santa Rosan was known as the Plant Wizard?

a. Luther Burbank

*100 Most Popular Scientists for Young Adults, page 58*

10. The year 2012 is a leap year. Why do we add an extra day to February and when will the next leap year be?

a. *The extra day is added to February in order to keep the calendar synchronized with the solar year. The calendar normally has 365 days in it, but the earth actually goes around the sun in a little less than 365.25 years. The extra year is added to make up the difference, usually every four years. The next leap year will be in 2016.*

*World Book Student Encyclopedia – “Leap Year”*

11. Who was the first man to orbit the earth?

a. Yuri Gagarin was the first human into space and the first to orbit the earth, completing one orbit before re-entry, April 12, 1961. He did not land in his spacecraft, but rather ejected and parachuted to earth upon re-entry. Aboard Friendship 7, John Glenn was the first American to orbit the earth on February 20, 1962 and splashed into the ocean in his spacecraft. He

was also the first person to take color photographs of our planet from space.

<http://blogs.smithsonianmag.com/science/2011/04/50-facts-for-the-50th-anniversary-of-the-first-man-in-space/>

12. When was the first chess game between outer space and earth played?

- a. The first chess game played between outer space and earth occurred on **June 9, 1970** (needed at least the month and year) by the crew of Soyuz-9. The cosmonauts played designed specifically for a weightless environment. The game ended in a draw [http://www.chess-poster.com/english/notes\\_and\\_facts/did\\_you\\_know.htm](http://www.chess-poster.com/english/notes_and_facts/did_you_know.htm)

## The World

13. Where were peanuts first grown?

- a. These popular baseball-game snacks were originally grown by native peoples of South America (Peru, Ecuador, etc. also accepted). Spanish explorers brought the plant back to Europe, where it then spread to Africa and then to North America. American chemist George Washington Carver discovered more than 300 uses for the peanut plant.

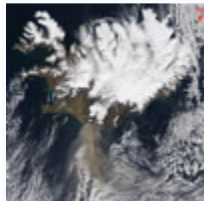
<http://www.smithsonianeducation.org/migrations/zoofood/pnut.html>

14. This island nation is home to many active volcanoes. A plume of ash and steam, visible along the southern coast, rises from a volcano that erupted in March 2010. It produced an ash cloud large enough to shut down airports across more than 20 European countries. Name the island nation.

- b. Iceland. The volcano Eyjafjallajokull erupted on March 20, 2010, and continued for several months. The second eruption in April produced enough ash and steam to close airports in Northwest Europe for days.

*Smithsonian National Air and Space Museum:*

<http://www.nasm.si.edu/research/ceps/gaw/gfs.cfm?year=2010&view=answer>



## Odds and Ends

15. How long was the Pony Express in operation?

- c. Although in action for only **19 months (18 months also accepted, as well as actual dates)** when the completion of the transcontinental telegraph ended its operations, the Pony Express was of great historical significance. The Pony Express proved to the eastern establishment that the Central Route could be used by the railroads to bind our country together. In less than a decade the Central Pacific and the Union Pacific rails would meet at Promontory, Utah, to form the nation's first transcontinental railroad.

[www.ponyexpress.org/history](http://www.ponyexpress.org/history)

16. Have professional footballs always been brown?

- d. **No.** The NFL and AAFC used a white football in night games from 1929 to 1956, to help the players see the ball in poor lighting. In the 1950s, the NFL also prohibited teams from wearing white helmets and jerseys in night games, so that the white ball could be seen against the players' uniforms. Some teams thus had different helmets and jerseys for day and night games.

[http://www.profootballresearchers.org/Coffin\\_Corner/21-02-792.pdf](http://www.profootballresearchers.org/Coffin_Corner/21-02-792.pdf)

**For fun and extra credit – 2 points each; no documentation necessary**

17. A Classic Riddle – what is it?

***Alive without breath,  
As cold as death;  
Never thirsty, ever drinking,  
All in mail never clinking***

- a. **A fish**

18. What happens at the Rincon Valley Library between 3:00 and 4:00 on Thursdays?

- a. The Read to a Dog Program

<http://www.sonomalibrary.org/cgi-bin/webevent.cgi?y=2012&m=1&d=16&cmd=calmonth&de=1&tf=0&sib=1&sb=0&sa=0&ws=0&stz=Default&sort=e,m,t&cat=5,2&swe=1&cf=cal&set=1&cal=cal8>

19. How many points are possible on this Scavenger Hunt?

- a. **56**

20. In this 6x6 Sudoku puzzle, each column, row and mini-grid must contain the numbers one through six with no repeats. Fill in the blanks.

5	2	1	6	4	3
6	4	3	2	5	1
3	1	4	5	6	2
2	5	6	1	3	4
4	6	2	3	1	5
1	3	5	4	2	6